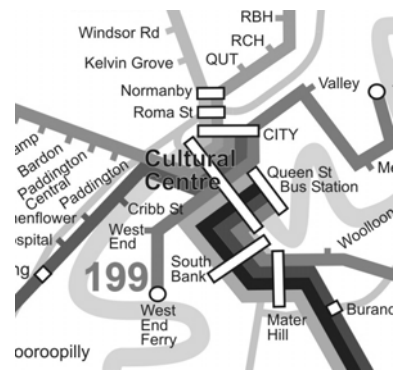


# Network Features

---

- caters for increasing spread of work start & finish times
- provides high frequency off-peak service to & from Brisbane's major recreation facilities
- provides effective integration with the rail network
- all routes have a common, high quality interchange point -- Cultural Centre Busway Station

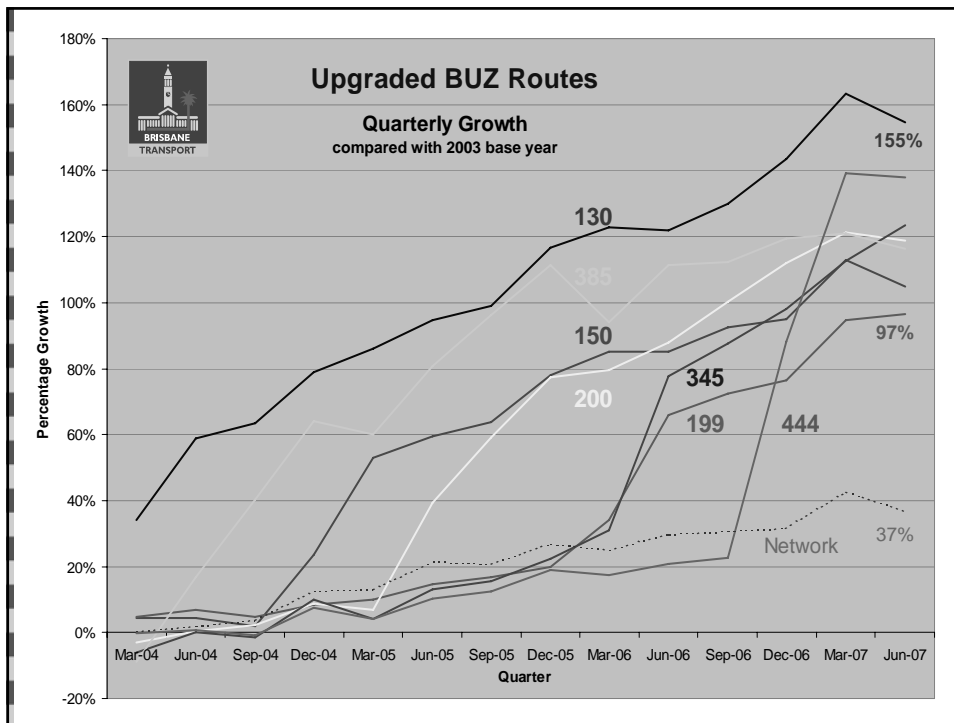


# Results

---

- Spectacular overall growth



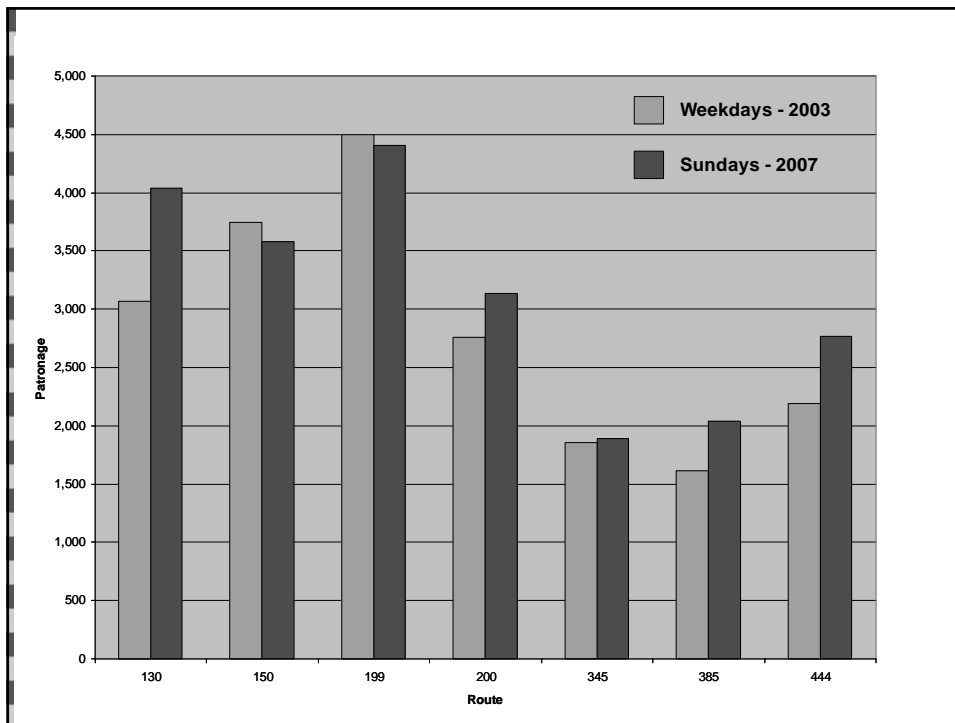


## Results

- Spectacular overall growth
- Enormous off-peak growth

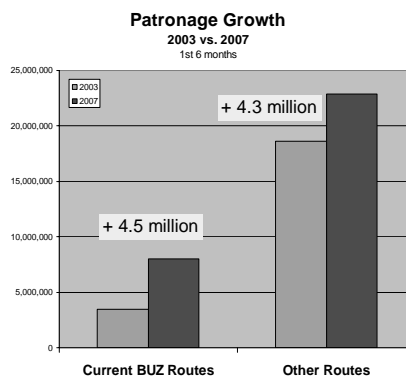
<i>Route</i>	<i>Upgraded</i>	<i>Overall</i>	<i>Weeknights</i>	<i>Saturdays</i>	<i>Sundays</i>
<b>130</b>	Jan 04	155%	185%	163%	250%
<b>385</b>	Mar 04	116%	230%	172%	234%
<b>150</b>	Nov 04	105%	152%	127%	188%
<b>200</b>	Apr 05	119%	156%	154%	257%
<b>199</b>	Feb 06	97%	291%	180%	188%
<b>345</b>	Feb 06	123%	252%	181%	218%
<b>444</b>	Oct 06	138%	165%	228%	266%





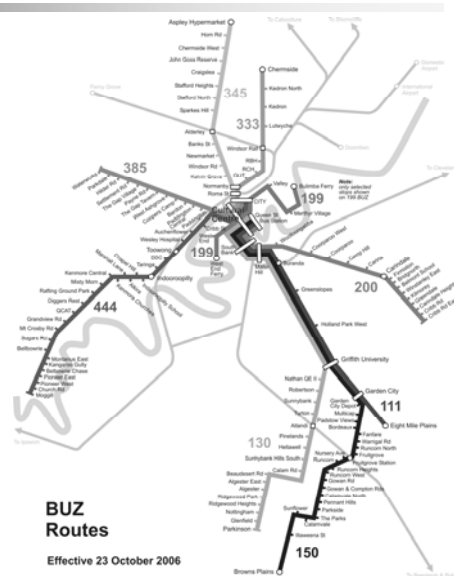
# Results

- Spectacular overall growth
- Enormous off-peak growth
- Sunday patronage now higher than previous weekday patronage on most routes
- BUZ growth represents 51% of total growth since 2003



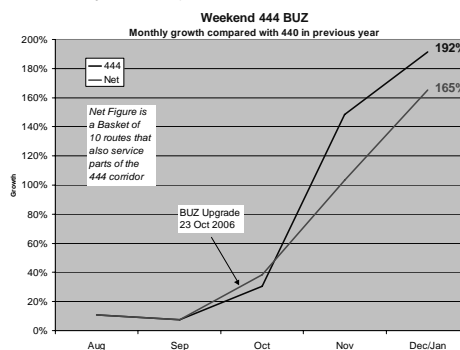
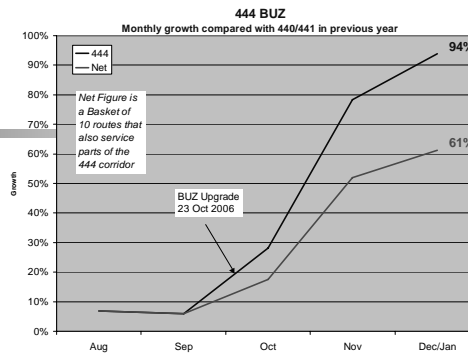
# Results

- Spectacular overall growth
- Enormous off-peak growth
- Sunday patronage now higher than previous weekday patronage on most routes
- BUZ growth represents 51% of total growth since
- Peak frequencies are being progressively extended across the off-peak periods.



# Results

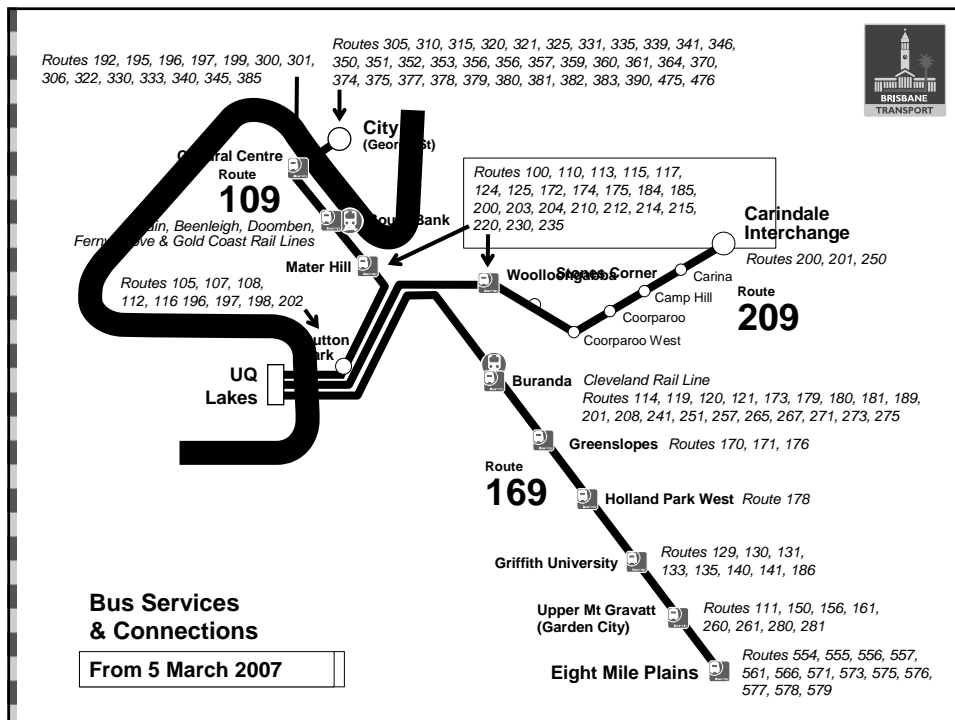
- Newest BUZ route, 444 to the western suburbs, introduced on 23 October 2006
- Figures for first 3 months illustrate the extent of growth in a short time frame..





# Frequency PLUS Infrastructure

## Eleanor Schonell Bridge Services



## Former Dedicated UQ Bus Service

### Route 407 via Coronation Drive

- In 2006, carried an average of 3,600 passengers per day

